



LIVE IN COMFORT
WITH LIVIN'HOME.





livin'home

Livin'home. The unique home automation system.

Livin'home, the integrated home automation system that manages your home at the touch of a button. A unique solution that makes home control easy, comfortable and functional. A modular system that offers different access and management modes that live together in an easy-to-use way. A customizable solution based on your personal habits and lifestyle.

At the base of the Livin'home system is the solid data-processing motor of the SmartLiving system: a control panel unequalled in providing loss prevention and security solutions. In this way, you have an advanced intrusion control system and important home automation features which range from the activation of outputs and timers to scenario management.

This is a state-of-the-art approach with regard to the immediacy of the user interface, the communication



infrastructure and the technologies of analysis and response.

The SmartLiving system can be enhanced with user interfaces which provide basic intrusion control functions, for instance, Concept keypads or nBY proximity readers for access control. Alternatively, you can have system control at your fingertips by adding Alien, INIM's colour touchscreen user interface. Or you can access all the home-automation functions you like directly from your Smartphone from wherever you are via the web interface of the SmartLAN/G or via AlienMobile App.

However, if you want a best-in-class multimedia touchscreen we have exactly what you are looking for, Evolution, the most advanced device on the market for complete home-automation control.

E-mail notifications



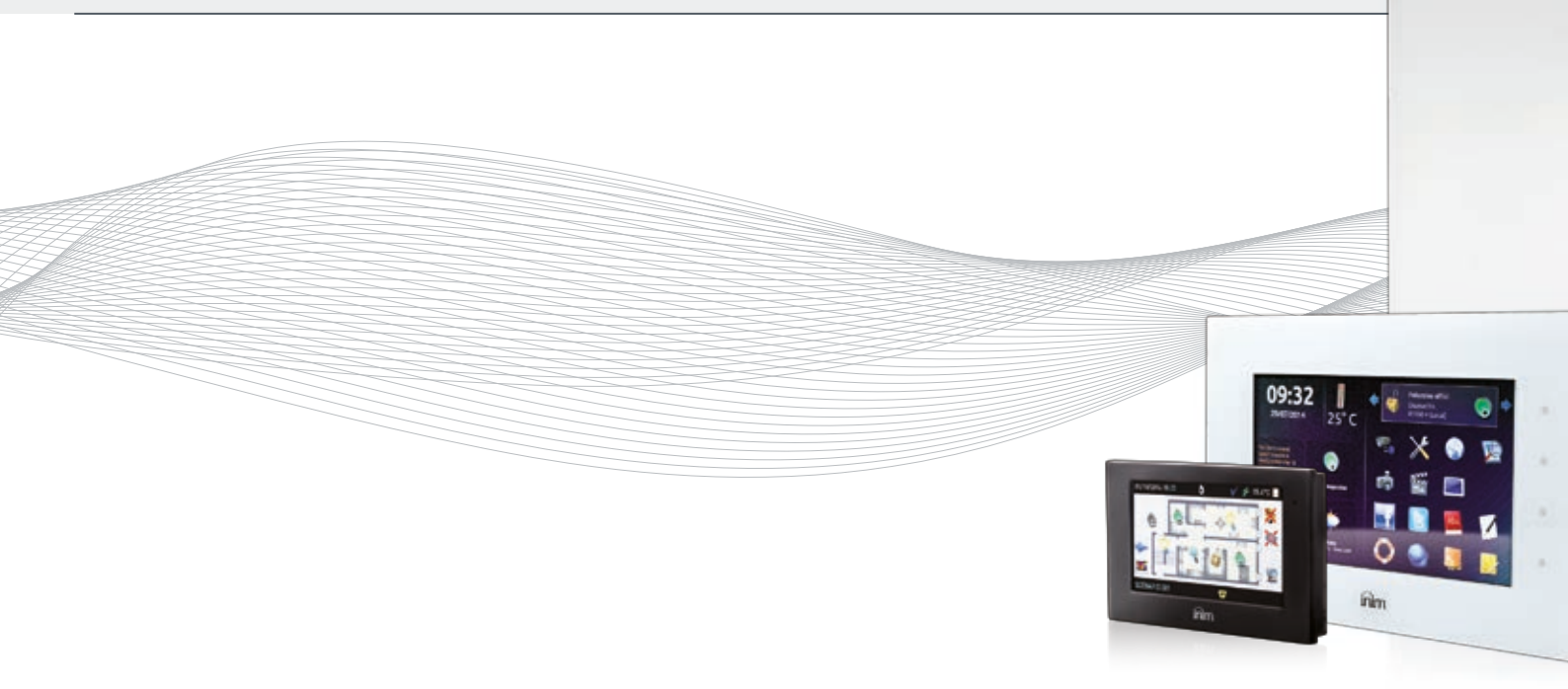
Weather forecast



Posts in real-time



Digital photo frames



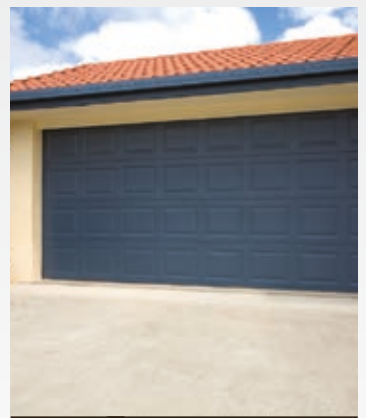
Irrigation



Lighting



Perimeter detection



Entry and rollerblind control

Web navigation



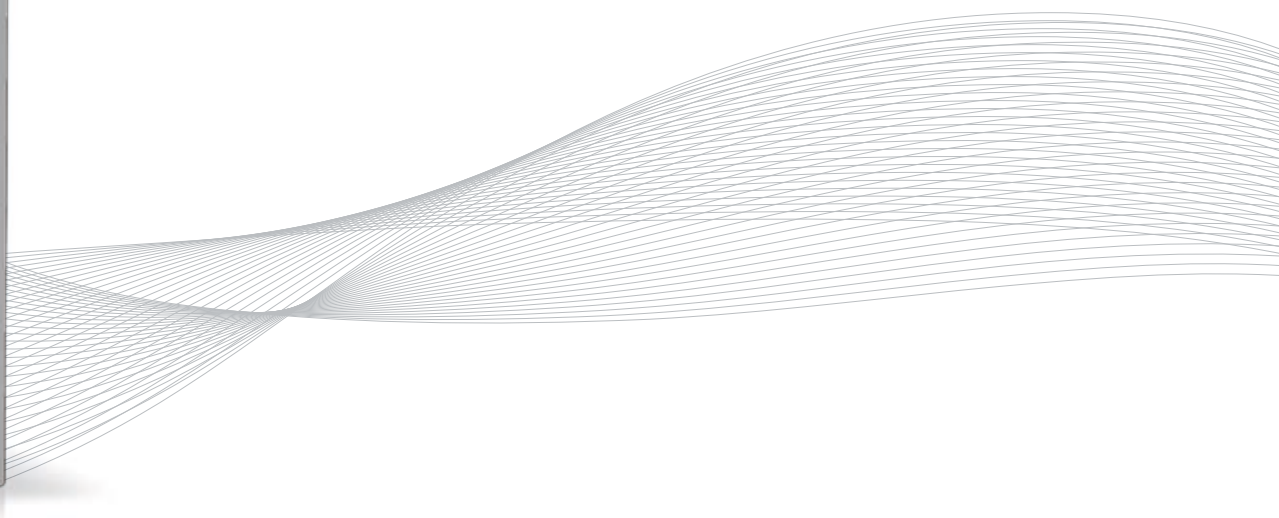
Telerescue



Scenario management



Multimediality



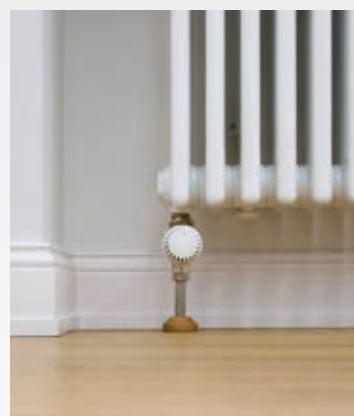
Intrusion control system



Fire detection



Videoverification



Heating and air-conditioning control





Evolution

Home automation has become a pleasure thanks to "Evolution", Inim's multimedia 7 inch touchscreen interface. This advanced device allows you to control lighting, activate air-conditioning and sprinkler systems, roll up rollerblinds, open gates, view camera images, open internet browsers and much more. Customizable buttons and widgets provide real-time information on selected topics, such as the local weather forecast, world time zones and current temperatures. In addition, if you wish to flick through your favourite photos, the slide-show option will allow you to view them at leisure. You can also monitor specific areas of the house through IP camera images and event notifications. Interact via your mobile device via the integrated web-server. Use graphic maps. Plus, you can centrally manage the data from as many as 10 installations.



Alien/G and Alien/S

Your home at your fingertips. Just one touch and your home will do as you command. Alien makes everything simple, clear and easy. That way, you will never be confused because Alien, with its clear and understandable instructions, will guide you effortlessly through every situation. Would you like to configure your security system or activate a pre-programmed domotic scenario...just one touch is all it takes. Alien also provides captivating graphic-management features which allow you to select the display skin you prefer or change the background with the images you like best. It is possible to use interactive graphic maps which can be fully customized to represent the environment concerned. Alien even provides a photo-frame feature for easy photo viewing. Alien is INIM's new colour touchscreen interface. You can choose from two models: Alien/S with a 4.3 inch display or Alien/G with a 7 inch display.



SmartLAN/G

The SmartLAN/G board is the ultimate frontier in TCP/IP connectivity. It allows you to interact with the SmartLiving systems and use your SmartPhone to send commands, via any Internet browser, without requiring an application on the phone. Additionally, thanks to a built-in Web-server, your SmartPhone can operate as a virtual keypad both inside the building, through the WiFi network, and from any part of the world, through the GSM or GPRS network. This board also allows you to control lighting, open doors, read the events memory and send e-mails and attachments. To interact via the customizable interactive maps which you can generate from any image and on which you can position any icon. To access the advanced functions of videoverification that allow access and control of the system IP camera. To issue commands through the AlienMobile App for iPhones, iPads and Android devices.



Flex5/DAC

Flex5/DAC allows you to control domestic appliances such as washing machines, dryers, ovens and dishwashers. It also allows you to control household utilities such as centralized lights and electrical switches, thus allowing the adjustment of internal lighting intensity and management of numerous household activities. The simultaneous management of several Flex5/DAC outputs can also allow the arrangement of lighting colours. That is not all: the board is also capable of controlling the phase shift between the current and voltage of each single output, in such a way as to control any inefficiency in the household electrical system.



Nexus

The Nexus goes beyond the normal scheme of things and launches the user into the world of connectivity. This revolutionary GSM device connects directly to the SmartLiving BUS without the need of any extra wiring. It can be programmed to send voice calls and digital reports over the landline and over the GSM network (interfaced through the Nexus). By providing the control panel with another number, the Nexus can answer incoming calls. In such situations, the system will activate the Voice menu which accepts DTMF commands over-the-phone. The SmartLiving system is also capable of sending customizable SMS text messages for each event and accepts SMS commands. In this way, users can manage scenarios and outputs and even make device-status enquiries to the control panel. These operations require CallerID and are free of charge.



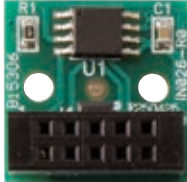
nBoss

If you want to be in control of things, nBoss is for you. This pocket proximity tag will allow you to activate and deactivate all the intrusion system functions in one go. Simply hold the tag in the vicinity of the reader, no code entry required. The nBoss is available in black leather and can be used as a keyring: technology dressed up.



Concept

With Concept/G Inim's technology has touched perfection. This exciting system control tool combines first-rate technical features with elegant design. Its super bright, intuitive touchscreen permits fast access to all functions and consents to trouble-free control of the security system. An attractive touchscreen replaces keys and offers unbeatable accuracy and enhanced reliability. Its easy-clean, glossy black casing blends seamlessly with any décor. The 4 shortcut keys under the graphic display allow easy control of the system and also operate as Emergency key duos. The Concept/G keypad is equipped with an input/output terminal and is dislodgement and open-tamper protected.



SmartLogo30M

Although small, the SmartLogos30M board packs a concentrate of superior technology and unique features. It provides the SmartLiving system with exceptional voice features such as: management of 500 voice messages (for 30 minutes recording time), pre-recorded voice dialler function, voice dialler, voice menu on keypad and over-the-phone, memo-box, intercom and voice prompts. The latter is useful when it becomes necessary to inform the installer of faults or to warn building occupants to leave the protected area after an arming operation, or to warn them to disarm the system after re-entering the building.



IGKNX100

Conceived to provide the highest level of integration between SmartLiving and Konnex systems. The IGKNX100 gateway is a simple yet extremely reliable bidirectional interface that allows you to carry out operations in the world of KNX* (in response to events that occur on the SmartLiving system) and to give commands requested by the KNX system to the SmartLiving system. This is possible when IGKNX100 is programmed with the respective software application. Each gateway interfaces with the control panel through the control panel serial port or via SmartLan/G or SmartLan/SI Ethernet interface.

* The KNX mark is property of KNX Association cvba.



SmartLook

SmartLook is a total control software package for the centralized supervision and management of Inim's intrusion control systems. It allows home computers to become "house managers" and thus lets you take full advantage of the real potential of the SmartLiving series control panels. The SmartLook supervisory software uses graphic maps which can be linked together in a tree structure. Each map accepts an arbitrary number of objects. These objects can be either supervised elements or one-stroke scenario buttons. The SmartLook software also integrates video capabilities and consents to the incorporation of cameras and DVRs with IP network web interfaces. In this way, the SmartLook application is capable of sending event notifications and providing real-time information and surveillance-camera images. The application is capable of managing as many as 30 installations connected via Internet.



Air2

The Air2 intrusion control system provides first-rate wireless protection through two-way signal transmission technology. This means that all the system devices transmit and receive salarm signals. The high-performance Air2 system is easy to install, supports advanced add-on devices, provides simple diagnostics and uses long-life batteries.

BS100. Powerful transceiver with I-BUS interface.

IR100. Wireless programmable two-way PIR detector.

KF100. Remote control keyfob.

MC100. Magnetic contact with two programmable terminals.

MC200. Wireless magnetic contact with integrated tilt and shock sensor.

XIR200W and XDT200W. Digital PIR and dual technology detectors.

DT200T. Dual technology motion curtain detector with anti-masking function.

OTT100W. Wireless triple technology detector for outdoor installation.

UT100. Universal wireless transceiver.